

EQUIPMENT SERVICES

2025 PRODUCT CATALOG



SPECIALTY

Equipment Services



EMAIL: EQUIPMENTSERVICES@UNFI.COM PHONE: 1.800.835.0165

Inside this section:

Popcorn Displays	4
Popcorn Equipment	5
Wine & Liquor Displays	7
Wine & Liquor Accessories	14
Wine Sampling	16
Wine & Liquor Signage	17
Coffee Equipment	18
Juicing Equipment	19
Smallwares	20
Digital Menu Boards	21
Custom Millwork	22
Refrigeration—see refrigeration section	N/A

Contact UNFI Equipment Services for member pricing & ordering
equipmentservices@unfi.com or 1.800.835.0165

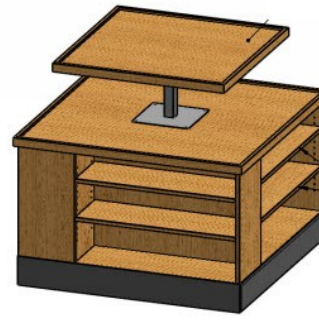
Items in this catalog are subject to change & availability



ROUND DISPLAYS

- Shop-around fixtures for displaying specialty products
- Adjustable shelves w/ PTM & product stop rails
- Choice of finish

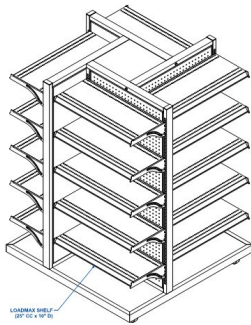
ITEM NO	SIZE	DESCRIPTION
TIER-DISP 02B C	60"H X 36" DIAMETER	BASE + 4 ADJ SHELVES + FIXED TOP
TIER-DISP 03B C	60"H X 48" DIAMETER	BASE + 4 ADJ SHELVES + FIXED TOP
TIER-DISP 05B	60"H X 60" DIAMETER	BASE + 4 ADJ SHELVES + FIXED TOP



4x4 TABLE W/ TOPPER

- Solid top w/ 3x3 fixed topper
- Lower cabinet has 2 adj shelves per side
- 6" toe-kick

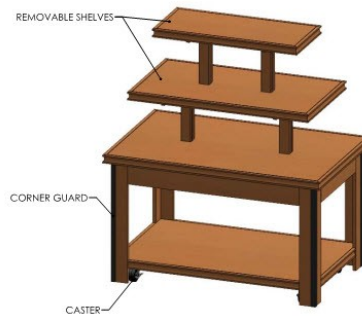
ITEM NO	SIZE	DESCRIPTION
DISP-38857 OSB	48" X 48" X 45"H	CHOICE OF FINISH



4-WAY ON CASTERS

- Shoppable from all sides
- Includes 5 adjustable shelves per side
- Casters for mobility

ITEM NO	SIZE	DESCRIPTION
SUPVA-032	40" X 40" X 54"H	BLACK FINISH



MOBILE MERCHANDISERS

- Table with lower shelf + 2 upper tiers
- All levels have PTM
- Casters for mobility

ITEM NO	SIZE	DESCRIPTION
BAK-1641	30" X 30" X 54"H	CHOICE OF FINISH
BAK-1640	48" X 30" X 54"H	CHOICE OF FINISH



VENTLESS POPCORN POPPER

- Includes floor base cabinet
- 50oz capacity flex pop system
- Updraft model- exhausts through HEPA filters & vents out the top

ITEM NO	SIZE	DESCRIPTION
2911-327	41"W x 33"D x 82.25"H	VENTLESS POPCORN POPPER W/ BASE. FIRE SUPPRESSION IS REQUIRED! 120/208-240v/60



MARK 10 CARAMEL COOKER

- Low profile mixer - right or left hand dump
- 10 gallon capacity work horse
- Turns out 10lbs per batch & produces 3-4 batches / hour

ITEM NO	SIZE	DESCRIPTION
2410-00-112	28.6"W x 20.2"D x 39.66"H	MARK 10 CARAMEL COOKER- LEFT HAND DUMP 120-240/208
2410-00-102	28.6"W x 20.2"D x 39.66"H	MARK 10 CARAMEL COOKER- RIGHT HAND DUMP 120-240/208
2436-001	29.4"W x 25.4"D x 11"H	MARK 10 SHORT BASE



KARMELOO TABLE

- Caramel popcorn cooling table
- Efficient & simple-to-replace air filters
- Ergonomic load & unload height adjustable table

ITEM NO	SIZE	DESCRIPTION
2169-00-100	34"W x 34.7"D x 20"H(DOWN)36"(UP)	KARMELOO TABLE 120V



POPCORN CHEDDAR EASY

- Cheddar tumbler w/ hot plate & heat lamp
- 23" foot print
- 8 gal. capacity of popcorn, tumbles & mixes cheese corn w/ minimal breakage

ITEM NO	SIZE	DESCRIPTION
2703-00-000	23"W x 24.1"D x 34.3"H	CHEDDAR TUMBLER, 120V



POPCORN STAGING CABINET

- High visibility glass with led lighting
- Individual heat controls per compartment
- 3 separate upward hinged doors for easy serving & cleaning

ITEM NO	SIZE	DESCRIPTION
2687-00-020	48.312"W x 29.28"D x 26.625"H	3-SECTION POPCORN STAGING CABINET, 120V



CARAMEL APPLE DIP WARMER

- High-output twin warmer
- Melts ready-to-melt caramel in 1.5-2hrs
- Perfect fit to any concession stand

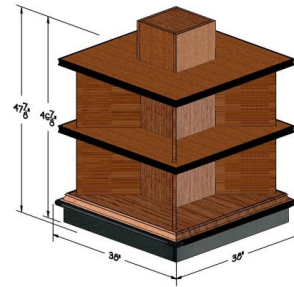
ITEM NO	SIZE	DESCRIPTION
4211C	27.25"w x 15"d x 12.5"h	CARAMEL APPLE DIP WARMER, 120V



ROUND WINE ISLANDS

- 3 levels with ABS liner and PTM
- 14" spacing between shelves
- 2 size options

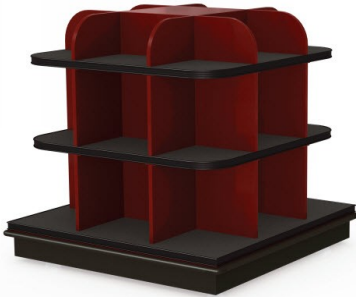
ITEM NO	SIZE	DESCRIPTION
WD1442-BH	36" DIA X 42"H	CHOICE OF FINISH
WD0763-BH	48" DIA X 42"H	CHOICE OF FINISH



WINE/SPIRIT ISLAND

- 3 levels with PTM
- 14" spacing between shelves
- Casters for mobility

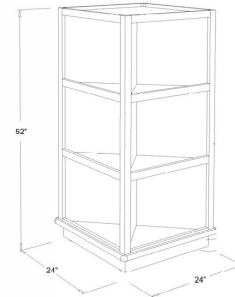
ITEM NO	SIZE	DESCRIPTION
WD0281-M	38" X 38" X 47"H	CHOICE OF FINISH



WINE ISLAND

- 3 levels with ABS liner and PTM
- 14" spacing between shelves
- Casters for mobility

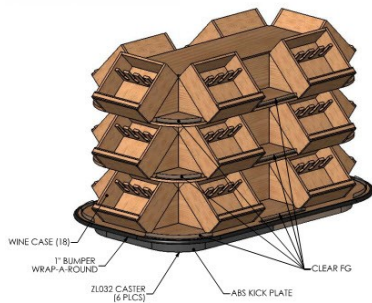
ITEM NO	SIZE	DESCRIPTION
C-WD-SA-B-484847M-1	48" X 48" X 46"H	CHOICE OF FINISH



SMALL WINE ISLAND

- 4 levels of merchandising
- 14" spacing between shelves
- Casters for mobility

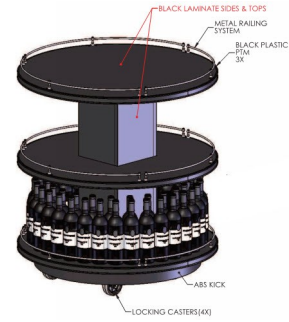
ITEM NO	SIZE	DESCRIPTION
WD0280-M	24" X 24" X 51"H	CHOICE OF FINISH



WINE CRATE ISLANDS

- 3 levels plus extra merchandising space on top
- Angled crates w/ ptm
- Casters for mobility

ITEM NO	SIZE	DESCRIPTION
WN-026 O	48" X 48" X 54"H	CHOICE OF FINISH
WN-107	48" X 84" X 54"H	CHOICE OF FINISH



MOBILE WINE ISLAND

- 3 levels with PTM and metal railing system
- 16" shelf spacing
- Casters for mobility

ITEM NO	SIZE	DESCRIPTION
WINE-RACK 0055V	36" DIA X 39"H	BLACK



ROUND WINE ISLAND

- 3 levels with PTM
- 16" shelf spacing
- Melamine shelf

ITEM NO	SIZE	DESCRIPTION
WN-41129 RO	36" DIA X 42"H	CHOICE OF FINISH



WIRE WINE DISPLAYS

- Angled top shelf for bottle display
- Holds 12 bottles per column
- Can be mounted to wall or used back to back to form an island

ITEM NO	SIZE	DESCRIPTION
WWDTR-PC059	43"w x 10"d x 52"h	10 BOTTLES WIDE
WWDTR30-PC059	28"w x 10"d x 52"h	6 BOTTLES WIDE

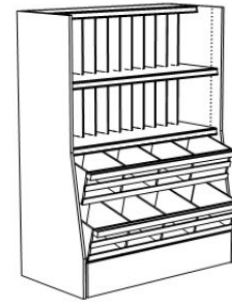
ADDITIONAL HARDWARE AND SIGN HOLDERS AVAILABLE



WINE WALL W/ 2 BASKETS

- 3 upper shelves w/ 36 bins and PTM
- 2 basket shelves divided into 4 sections
- Base includes pull-out drawer for extra storage or overstock

ITEM NO	SIZE	DESCRIPTION
W*W-5092-S2B36BT (CLR)	50"W X 30"D X 92"H	STARTER UNIT - CLEAR FINISH
W*W-4992-A2B36BT (CLR)	49"W X 30"D X 92"H	ADD-ON UNIT - CLEAR FINISH
W*W-5092-S2B36BT (STN)	50"W X 30"D X 92"H	STARTER UNIT - CHOICE OF STAIN FINISH
W*W-4992-A2B36BT (STN)	49"W X 30"D X 92"H	ADD-ON UNIT - CHOICE OF STAIN FINISH



LOW WALL W/ 2 BASKETS

- 2 upper shelves w/ 24 bins and PTM
- 2 basket shelves divided into 4 sections
- Base includes pull-out drawer for extra storage or overstock

ITEM NO	SIZE	DESCRIPTION
W*W-5068-S2B24BT (CLR)	50"W X 30"D X 68"H	STARTER UNIT - CLEAR FINISH
W*W-4968-A2B24BT (CLR)	49"W X 30"D X 68"H	ADD-ON UNIT - CLEAR FINISH
W*W-5068-S2B24BT (STN)	50"W X 30"D X 68"H	STARTER UNIT - CHOICE OF STAIN FINISH
W*W-4968-A2B24BT (STN)	49"W X 30"D X 68"H	ADD-ON UNIT - CHOICE OF STAIN FINISH



VERTICAL WINE ISLAND

- Angled top shelf for bottle display w/ PTM
- Holds 12 bottles per column
- Narrow design allows for multiple island runs in minimum space

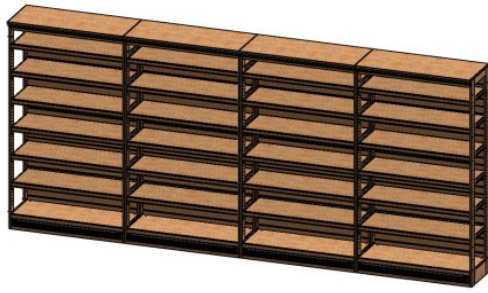
ITEM NO	SIZE	DESCRIPTION
WN-41121 RO	49"W x 28"OAD X 55"H	CHOICE OF FINISH



WINE WALL

- Base + 4 adjustable shelves w/ PTM
- Solid back panel, bumper on base
- Open top with crown molding on front

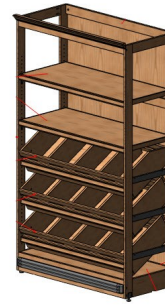
ITEM NO	SIZE	DESCRIPTION
WN-40626 RO	48"W x 22"D x 70"H	CHOICE OF FINISH



HIGH WINE WALL

- Wood wine shelving with slatwall back panel
- Base + 6 adjustable shelves
- Solid top with crown molding & bumper

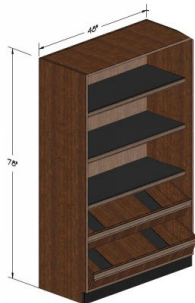
ITEM NO	SIZE	DESCRIPTION
WN-210 RO	4" w x 18 3/4" d x 85" h	CHOICE OF FINISH
WN-209 RO	16" w x 18 3/4" d x 85" h	CHOICE OF FINISH



WINE WALL W/ 3 CRATES

- Wood wine shelving with solid back panel
- Base + 3 crate & 2 adjustable shelves w/ PTM

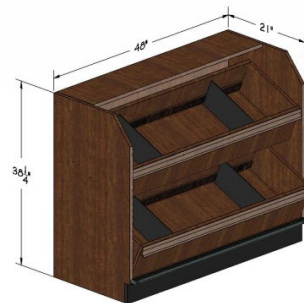
ITEM NO	SIZE	DESCRIPTION
WN-001 WM O	48 3/4" w x 24" d x 85" h	CHOICE OF FINISH



HP WINE WALL W/ CRATES

- Wood wine shelving
- 2 lower crates & 3 fixed shelves w/ PTM
- Shelves have ABS liners and crates w/ ABS dividers

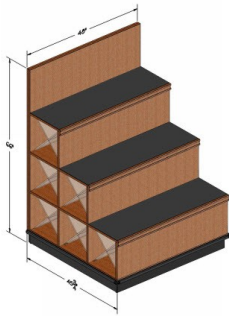
ITEM NO	SIZE	DESCRIPTION
WD0938-M-P	48" W X 24" OAD X 78" H	CHOICE OF FINISH
WD1278-M	36" W X 24" OAD X 78" H	CHOICE OF FINISH



LP WINE WALL W/ CRATES

- Low profile wood wine shelving
- 2 crates w/ PTM and ABS dividers
- Works well in front of low windows

ITEM NO	SIZE	DESCRIPTION
WD0937-M-P	48" W X 24" OAD X 38" H	CHOICE OF FINISH
WD0940-M-P	36" W X 24" OAD X 38" H	CHOICE OF FINISH



3-STEP END CAP

- Steps w/ ABS liner and PTM
- Acrylic "X" dividers in each cubby space
- Bumper on 3 sides

ITEM NO	SIZE	DESCRIPTION
EC0774-M	48"W X 45 3/4"D X 66"H	CHOICE OF FINISH



RADIUS WINE END CAP

- Base & upper shelves with ABS liner & PTM
- Base with bumper & heavy duty levelers
- Fixed radius shelves spaced to hold most wine & liquor bottles

ITEM NO	SIZE	DESCRIPTION
SUP-WINE-END001-203	42"W X 54"H X 21"D	B + 2 LEVELS - CHOICE OF FINISH
WD1539-M	42"W X 60"H X 21"D	B + 3 LEVELS - CHOICE OF FINISH
WD1542-M	42"W X 66"H X 21"D	B + 3 LEVELS - CHOICE OF FINISH
WD0368-BH-P	42"W X 72"H X 21"D	B + 4 LEVELS - CHOICE OF FINISH
C-WD-CEND-362158M-1	36"W X 58"H X 21"D	B + 3 LEVELS - CHOICE OF FINISH
WD0251-M	48"W X 56"H X 24"D	B + 2 LEVELS - CHOICE OF FINISH
SUP-WINE-END002-203	48"W X 66"H X 21"D	B + 3 LEVELS - CHOICE OF FINISH
WD1448-B	48"W X 78"H X 21"D	B + 4 LEVELS - CHOICE OF FINISH



WINGED WINE END CAP

- Base & upper shelves with ABS liner & PTM
- Base with bumper & heavy duty levelers
- Shelves separated by wings allow display of different varieties on front and sides

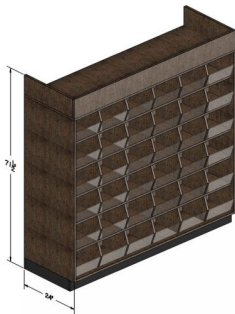
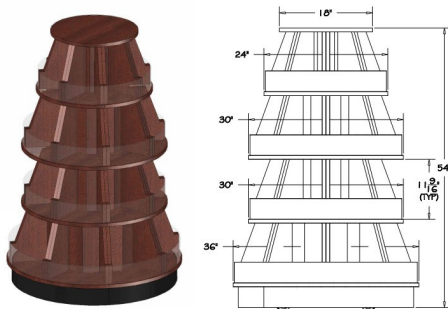
ITEM NO	SIZE	DESCRIPTION
C-WD-WEND-362158M-1	36"W X 58"H X 21"D	B + 3 LEVELS - CHOICE OF FINISH
WD0254-M	48"W X 72"H X 21"D	B + 4 LEVELS - CHOICE OF FINISH



WOOD WINE END CAP

- Base + 2 adjustable shelves with PTM
- Top with crown molding on 3 sides
- Base w/ bumper on 3 sides

ITEM NO	SIZE	DESCRIPTION
WN-010	48"W X 55"H X 24"D	CHOICE OF FINISH



ROUND MINI BOTTLE DIS- PLAY

- 4 levels of merchandising
- 8 cubbies per level with plexi fronts
- Casters for mobility

ITEM NO	SIZE	DESCRIPTION
WD1084-M	36"DIA X 54"H	CHOICE OF FINISH

MINI BOTTLE WALL DIS- PLAY

- Increase sales with this impressive display
- Cubbies w/ angled plexi fronts
- 2 sizes to choose from; smaller 18 cubby unit or massive 36 cubby unit

ITEM NO	SIZE	DESCRIPTION
WD1158-O	72"H X 72"W X 24"D	CHOICE OF FINISH
WD1545	36"H X 72"W X 24"D	CHOICE OF FINISH



CHECKOUT MERCHANDISER

- Small merchandiser for extra sales at checkout
- Unit has small 12"d top shelf & base w/ bumper
- Shelves must be ordered separately and include brackets and PTM

ITEM NO	SIZE	DESCRIPTION
MS1391-O	21"W X 17"D X 56"H	DISPLAY - CHOICE OF FINISH
PS0454-O	19"W x 14"D	SHELVES - CHOICE OF FINISH



LOCKING CHECKOUT MER- CHANDISER

- Small merchandiser for extra sales at checkout
- Enclosed unit with locking glass door
- Shelves must be ordered separately and include brackets and PTM

ITEM NO	SIZE	DESCRIPTION
MS1440-O	21"W X 17"D X 56"H	DISPLAY - CHOICE OF FINISH
PS0462-O	19"W x 11"D	SHELVES - CHOICE OF FINISH



TAUSTING/DEMO UNIT

- Tasting station w/ bottle display on front
- Cabinet doors and drawer on back side
- Top w/ cut out for trash & grommet for electric cord, caster for mobility

ITEM NO	SIZE	DESCRIPTION
WD0266-M	48"W X 30"D X 38"H	CHOICE OF FINISH



TAUSTING STATION & STOR-AGE CABINET

- Large tasting station w/ bottle display
- Separate cabinet with built in cooler
- Cabinet doors and drawers on back side. Top with trash & electrical cut outs.

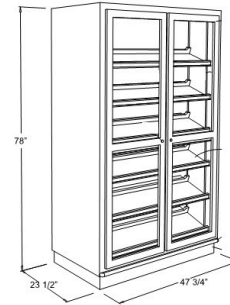
ITEM NO	SIZE	DESCRIPTION
WD1255-M	96"W X 48" OAD X 36"H	TAUSTING STATION
WD1254-M	36"W X 26 1/4"D X 36"H	CABINET W/ COOLER



LOCKING CABINET

- 1 fixed & 3 adjustable shelves w/ PTM
- ABS shelf liners
- 3 options to choose from

ITEM NO	SIZE	DESCRIPTION
C-WD-LOCK-4824840-1	48"W X 24"D X 84"H	STANDARD UNIT
WD1543	48"W X 24"D X 84"H	STANDARD UNIT W/ LED LIGHTING
WD0265-M	47 3/4"W X 23.5"D X 78"H	IN-LINE UNIT W/ LED LIGHTING



LOCKING WINE CABINET

- 6 levels of laydown display shelves w/ PTM
- Vertical LED lights included
- In-line unit has recessed base to fit in gondola lineup

ITEM NO	SIZE	DESCRIPTION
WD0284-BH-P	47 3/4"W X 23.5"D X 78"H	CHOICE OF FINISH



SECURITY DEVICE FOR BOTTLES

- Clear cap for better visual appeal
- 3 sizes to fit almost all bottle sizes
- Virtually impossible to remove without proper detacher. Will also activate standard EAS alarm systems if present.

ITEM NO	SIZE	DESCRIPTION
BT700-14	STANDARD	FITS MOST BOTTLES
BT700-71	EXTRA LARGE	FITS 1.75L BOTTLES
BT700-90	XXL	FITS PATRON, CABO WABO, ETC
OTD87-1	2.75" DIA	DETACHER



BOTTLE SHELF EXTENDER

- Highlight a single bottle on shelf
- Extends into aisle 4 3/8"
- Fits most standard perforated shelving & 4" dia base fits most wine bottles

ITEM NO	SIZE	DESCRIPTION
7900806900	4" DIA W/ 1"X2" LABEL HOLDER	BLACK POWDER-COAT



WOOD PRICE TAG MOLDING

- Use to dress up standard gondola shelving
- Stain to match your existing décor
- Installation instructions included

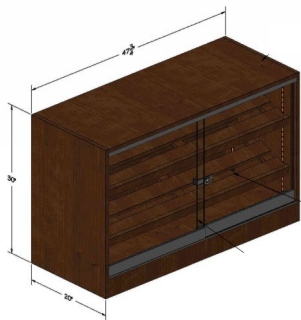
ITEM NO	SIZE	DESCRIPTION
SUP-WINE-ACC001-201	48"L (ACTUAL 47 5/8")	MAPLE
WD0552-M	36"L (ACTUAL 35 5/8")	MAPLE
WD0417-O	48"L (ACTUAL 47 5/8")	OAK
WD0552-O	36"L (ACTUAL 35 5/8")	OAK



CRATE SHELF FOR GONDOLA

- Unique display option for standard gondola
- Stain to match your existing décor
- Brackets fit into Lozier/Madix uprights

ITEM NO	SIZE	DESCRIPTION
WN-187 ROSB	47 7/8"W X 18"D	CHOICE OF FINISH



HUMIDOR CABINET

- Cabinet can be placed on a shelf or counter
- Includes (2) adjustable slat shelves
- Sliding glass doors with lock and habitat monitor

ITEM NO	SIZE	DESCRIPTION
WD0935-M	47 3/4"W X 20"D X 30"H	CHOICE OF FINISH



WINE CRATE FOR GONDO-LA SHELF

- Angled wine crate fits a 16"d shelf
- Wood species - Maple
- Includes wood price tag molding and sintra dividers

ITEM NO	SIZE	DESCRIPTION
SUP-WINE-CRT001-203	48"W X 19"OAD	FITS ON A 16"D SHELF, CHOICE OF FINISH
WD0301-M	36"W X 19"OAD	FITS ON A 16"D SHELF, CHOICE OF FINISH

WINE SAMPLING



**85% OF RETAILERS
REPORT THAT**

**SAMPLING INCREASES
SALES 25% OR MORE**



WineStation Features

With WineStation retailers are able to create a unique & memorable shopping experience while increasing profits.

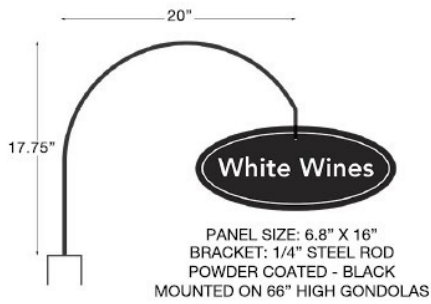
Utilizing the WineStation's secure & automated portion controls, retailers can simply & proficiently activate sampling of higher priced or featured wines daily, without the additional labor or expense of events.



Standard WineStation Features Include:

- 60 day preservation w/in the unit, 14 days preservation when bottles are stored outside the unit.
- Secure & automated portion controls
- State-of-the-art Thermo-Electric cooling system

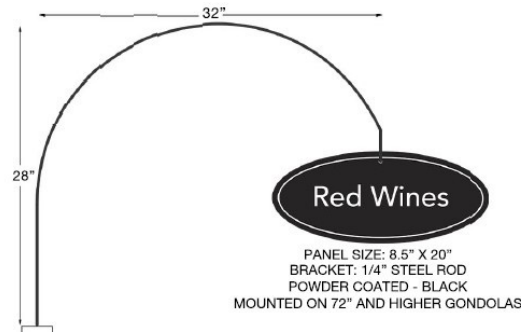
**Contact UNFI Equipment
Services for information**



WAYFINDING OPTION L

- Gondola Mounted
- Use with shorter gondolas
- Includes mounting bracket & sign plaque

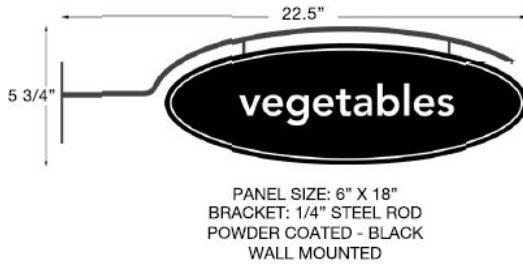
ITEM NO	SIZE	DESCRIPTION
DME-LBKT-OPT-L	17.75"H BRACKET & 6.8"H X 16"W OVAL PLAQUE	CUSTOMIZE VERBIAGE



WAYFINDING OPTION M

- Gondola Mounted
- Use with taller gondolas
- Includes mounting bracket & sign plaque

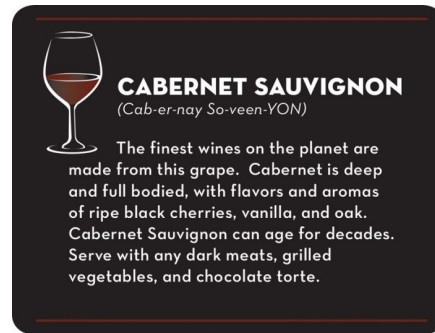
ITEM NO	SIZE	DESCRIPTION
DME-LBKT-OPT-M	28"H BRACKET & 8.5"H X 20"W OVAL PLAQUE	CUSTOMIZE VERBIAGE



OPTION K WAYFINDER

- Sign plaque w/wall mounted bracket
- Black metal bracket
- Alter colors of the sign plaque to tie in w/ existing décor

ITEM NO	SIZE	DESCRIPTION
DME-LBKT-OPT-K		
SIGN PANEL	6"H X 18"W OVAL	CUSTOMER PROVIDED VERBIAGE
MOUNTING BRACKET	5-3/4"H X 22.5"W	BLACK FINISH



WINE INFO TAGS

- Set of 19 informational tags
- Pairing recommendations
- Clips on to almost any display (clips & attachments not included)

ITEM NO	SIZE	DESCRIPTION
2440032	3-1/4"H X 4"W	SET OF 19 TAGS



TWIN TALL COFFEE BREWER

- Brews into 1 to 1.5 gallon TF Servers
- USB Programming available
- Twice the brew capacity, from a single platform

ITEM NO	SIZE	DESCRIPTION
58200.0101	35.0"H x 20.2"W x 22.3" D	TWIN TALL COFFEE BREWER, 120-240v/60/1



1.5 GAL SERVER W/ BASE

- 4hr digital count-up timer
- Brew-through design with flip lid cover
- Vacuum insulated to keep coffee hot for hours

ITEM NO	SIZE	DESCRIPTION
42750.02	22.7" H x 9.3" W x 13.0"D	1.5 GAL SERVER W/ BASE
42750.025	14.7" H x 9.1" W x 11.9"D	1.5 GAL SERVER NO BASE

COFFEE EQUIPMENT



SINGLE COFFEE BREWER

- Brews directly into airpot
- Comes with a hot water faucet
- Accommodates 1.9 - 3 Liter airpots - Sold separately

ITEM NO	SIZE	DESCRIPTION
23001.0006	22.7" H x 9.3" W x 13.0"D	SINGLE COFFEE BREWER, 120



PUSH BUTTON AIRPOT

- 2.5 Liter Portable airpot
- Stainless steel with black lid
- Push button dispenser

ITEM NO	SIZE	DESCRIPTION
13041.0001	16.8"H x 6.2"W x 27.9"D	PORTABLE AIRPOT



AUTOMATIC CITRUS JUICER

- Floor Model with top rotating basket
- 40 fruits per minute, automatic feed system
- Cabinet includes: 2 baskets with wheels, gastronomy tray & waste capacity

ITEM NO	SIZE	DESCRIPTION
CV40C-N80	69.37"H x 31.5"W x 26.18"D	110 Volts, 60 Hz, and 1-phase at 290 Watts
210536A-12		LARGE SQUEEZING KIT
210332A		EXTRA SMALL SQUEEZING KIT
210545A-1		FULL TRIP TRAY W/ DISPENSER TAP
0316004-N		BOTTLE RACK ACCESSORY



AUTOMATIC CITRUS JUICER

- Countertop model with top rotating basket
- 16 fruits per minute, automatic feed system
- Waste peel collection bin capacity: (2) 1.85 gallons

ITEM NO	SIZE	DESCRIPTION
Z14-NOR	32.36"H x 18.82"W x 18.11"D	110 Volts, 60 Hz, and 1-phase at 275 Watts



JUICE EXTRACTOR

- Countertop, multi-fruit juice extractor
- Half gallon of juice per minute
- Centrifugal juicing system with automatic pulp ejection

ITEM NO	SIZE	DESCRIPTION
222C	20.16"H x 11.4"W x 17.24"D	110 Volts, 60 Hz, and 1-phase at 800 Watts



WHEATGRASS JUICER

- Stainless steel base and motor housing
- Processes up to 5 oz of juice per minute
- Self-feeding stomper is furnished for quicker juicing of longer grass

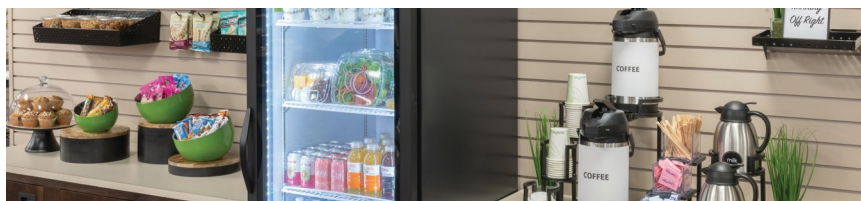
ITEM NO	SIZE	DESCRIPTION
SB0850	16" L x 7" W x 12" H (W/O PLUNGER)	.5 HP motor – 375-watt, 120 volt, 60 Hz

Specialty Solutions

HUBERT® and UNFI are proud to partner together to offer a direct order smallwares program to independent retailers. We understand the challenges food retailers face, so this program offers an array of benefits, products, and services

Benefits & Services Include:

- Discounted Pricing
- Flat Rate Shipping
- Volume Discounting



Products You Need, When You Need Them

Hubert© consistently delivers fast, accurate and low-cost fulfillment services

- Over \$20M in inventory and 30,000 + items available from a single warehouse.
- Our private label, HUBERT© Brand, quality cost saving items.
- 94% of all orders ship same day, 98% within 24 hours.
- 95% of all orders ship from the HUBERT© warehouse in Ohio, reducing the number of shipments to help manage freight cost.

Project Management

Experienced team members on hand to assist with ordering & execution of smallwares standards

- Assistance developing standardized order guides
- Managing smallwares for new stores, remodels & resets
- Experts in visual merchandising
- Free consultation services

HOW TO ORDER:

- Visit our website at www.hubert.com
or call 1-800-543-7374
- Legacy Supervalu retailers use account # 809240
- Legacy UNFI retailers use account # 233779
- For convenient invoicing: Legacy Supervalu retailers on your UNFI Retailer statement. Legacy UNFI retailers HUBERT© invoice or credit card

**Contact UNFI Equipment
Services for more information**

DIGITAL MENU SYSTEMS



EASY TO USE, EASY TO IMPLEMENT

- Easily connects to your in-store network
- 1st year SaaS license, training & support included
- Cloud based



Create dynamic menu displays with a UNFI digital menu board program

Cross Promote

Instantly Update Content Across Multiple Locations

Pre-schedule Specials & Promotions

Incorporate Full-Motion Video

Uses a Window or Android Media Player

Installation Services

Stock & Custom Solutions

Contact UNFI Equipment Services for information

EMAIL: EQUIPMENTSERVICES@UNFI.COM

PHONE: 1.800.835.0165

CUSTOM MILLWORK



SEASONED MANUFACTURERS

- Extensive convenience & grocery retail experience
- Creative solutions
- Transform & enhance on any budget



**Nationwide
First-Class
Custom Millwork**

Custom Displays

Custom Fixtures

Service Counters

Bars & Seating Counters

Front End & Ecommerce

Full millwork packages

Installation Services

**Contact UNFI Equipment
Services for information**

EMAIL: EQUIPMENTSERVICES@UNFI.COM

PHONE: 1.800.835.0165



BETTER FOOD. BETTER FUTURE.

EQUIPMENT SERVICES

**101 Jefferson Ave. S.
Hopkins, MN 55343**