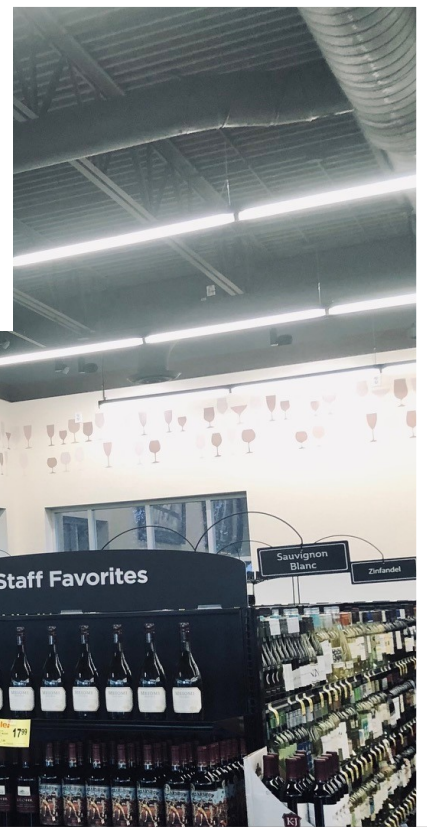


EQUIPMENT SERVICES

2025 PRODUCT CATALOG



LIGHTING

Equipment Services



EMAIL: EQUIPMENTSERVICES@UNFI.COM PHONE: 1.800.835.0165

Inside this section:

General Lighting	4
Specialty Lighting	6
Service Department & Office Lighting	9
Checkstand Lighting	11
Décor Lighting	12
Walk-in Cooler Lighting	13
Receiving & Backroom Lighting	14
Exterior/Safety Lighting	17
Retrofit Lighting	19
Decorative Lighting Solutions	21
Lamps & Ballasts Coming Soon!	N/A

Contact UNFI Equipment Services for member pricing & ordering
equipmentservices@unfi.com or 1.800.835.0165

Items in this catalog are subject to change & availability



CLX LED LINEAR STRIP

Product link: [CLX](#)

- Offers a permanent, attractive update to main sales floor lighting
- 45% energy savings over fluorescent T8
- Multiple outputs, lengths, lenses and mounting options



SLOT LED SERIES

Product link: [SLOT 2](#)

- Choose linear pendants for your high-end sales floor
- Clean fixture design includes low-glare lens options
- Available with direct and indirect outputs

Lighting is highly configurable & customizable
Additional site specific information will be required for quoting



JCBL LED SERIES

Product link: [JCBL](#)

- Traditional round styling in an updated LED
- Multiple housings, reflectors and lenses
- Optional Bluetooth sensors and energy controls



AMERLUX HIGH BAY 202

Product link: [High Bay 202](#)

- Round pendant LED designed for open ceiling concepts
- High CRI LEDs promise exceptional color rendering of fresh products
- Maximize energy savings with occupancy or daylight controls

Lighting is highly configurable & customizable
Additional site specific information will be required for quoting



SPEQ-M LED

Product link: [SPEQ-M](#)

- Produce & floral displays have never looked better
- The SPEQ-M's minimal design keeps the focus on the product
- High output options with excellent glare control for visual comfort

SPECIALTY LIGHTING



HORNET LED

Product link: [HORNET](#)

- Brighten small displays with a big punch of light
- Spotlight high-revenue products with this affordable option
- The HORNET boasts a small, compact style designers love

Lighting is highly configurable & customizable
Additional site specific information will be required for quoting

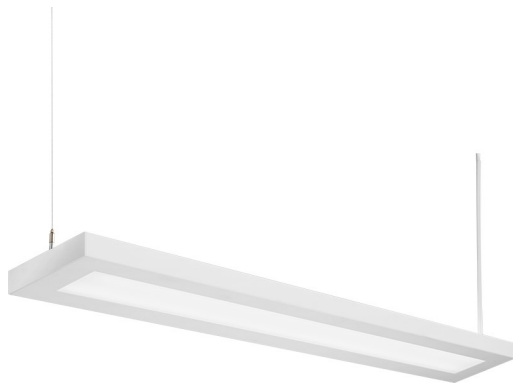


MURV LED

Product link: [MURV](#)

- Highlight vertical displays with new track head technology
- Unique wide-spread optics illuminate vertical shelving products like wine displays
- MURV is small in size but big in output with dimmable control options

SPECIALTY LIGHTING



GRAD LED

Product link: [GRAD](#)

- Rectilinear pendants brighten specialty kiosks
- Suspended fixtures offer classic styling
- Available in row or individual mounting

Lighting is highly configurable & customizable
Additional site specific information will be required for quoting



JCBL

Product link: [JCBL](#)

- Traditional round styling in an updated LED
- Multiple housings, reflectors and lenses
- Optional Bluetooth sensors and energy controls

SPECIALTY LIGHTING



AMERLUX HIGH BAY 202

Product link: [High Bay 202](#)

- Round pendant LED designed for open ceiling concepts
- Maximize energy savings with occupancy or daylight controls
- High CRI LEDs promise exceptional color rendering of fresh products

Lighting is highly configurable & customizable
Additional site specific information will be required for quoting



EPANL LED

Product link: [EPANL](#)

- Highly configurable flat panel fixture boast long-life LEDs
- NSF listed for foodservice & easy to clean
- Short lead-times meet demanding schedules



BLT LED

Product link: [BLT](#)

- Architectural appeal and smart design fills departments with light
- Fast installation out of the box
- Easy dimming capabilities to save even more energy

Lighting is highly configurable & customizable
Additional site specific information will be required for quoting



LDN LED

Product link: [LDN](#)

- Keep ceiling lines quiet and glare-free with new can lights
- Powerful outputs up to 12,000 lumens available in 4-10" apertures
- Hyperbolic trim options reduce glare and keep a comfortable focus on workstations

SERVICE DEPT &
OFFICE LIGHTING

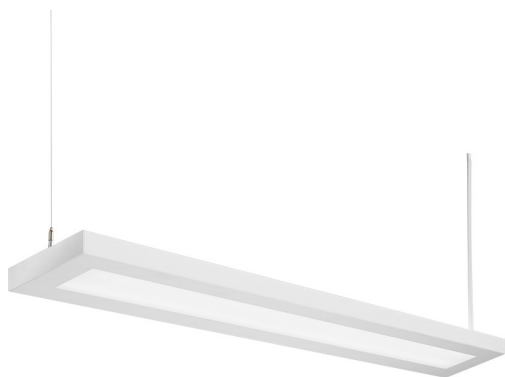
Lighting is highly configurable & customizable
Additional site specific information will be required for quoting



CLX LED

Product link: [CLX](#)

- Extend sales floor lighting to check stands for cohesive aesthetic
 - Dimmable options allow high output at point-of-sale for high acuity
 - Clean aesthetic updates front of store
-



GRAD LED

Product link: [GRAD](#)

- Comfortable illumination for check stand lighting
- Suspended fixtures add classic styling to the front of store
- Diffused lighting at checkout for worker and customer visual comfort



MURV LED

Product link: [MURV](#)

- Highlight signage and lead customers to high-profit departments
- Unique wide-spread optics light up signage and brighten millwork
- Small size to keep focus on signage, not the lighting



ZL1N LED

Product link: [ZL1N](#)

- Perimeter up-light increases customer perception of a bright, airy store
- The end-to-end installation option provides a consistent wash of light
- Easy installation with through-wiring options

Lighting is highly configurable & customizable
Additional site specific information will be required for quoting



DMW2 LED

Product link: [DMW2](#)

- Small in size, big in benefits
- Same performance as a 4' fixture in an affordable 2' fixture
- Snap-together construction for an easy, one-person installation

WALK-IN COOLER
LIGHTING



CSVT-LED

Product link: [CSVT](#)

- Affordable linear solution for lighting runs in coolers and other damp locations
- 4' and 8' fixtures are available in a large range of outputs
- Easy to install and maintain

Lighting is highly configurable & customizable
Additional site specific information will be required for quoting



IBG LED

Product link: [IBG](#)

- Increase product visibility and energy savings back-of-house
- High-bay mounting allows for high installation heights with increased fixture spacing
- A great one-to-one replacement of outdated high-output high bays utilizing existing power drops



CPHB LED

Product link: [CPHB](#)

- Budget-oriented high-bay designed with the contractor in mind
- 30% faster installation and cleanup saves on installation cost
- Compact design with incredible efficiency of 135 lumens per watt

Lighting is highly configurable & customizable
Additional site specific information will be required for quoting



CLX LED

Product link: [CLX](#)

- Linear LED fixtures offer a cost-effective option for back-of-house lighting
- Row or individual mounting to meet narrow installation needs
- Dimming and emergency battery options with high lumens per watt



CDS LED

Product link: [CDS](#)

- Cost-savings entry-level linear fixtures for back-of-house solutions
- Long-life LED's offer lower maintenance costs and higher ROI
- 8' fixtures allow cost-effective replacement of 4' fluorescents with fewer wiring connections

Lighting is highly configurable & customizable
Additional site specific information will be required for quoting



JEBL LED

Product link: [JEBL](#)

- Robust LED high bay withstands moisture and dust
- Ideal replacement for HID fixtures in demanding environments
- Easy installation saves on labor

RECEIVING &
BACKROOM LIGHTING

Lighting is highly configurable & customizable
Additional site specific information will be required for quoting



RSX LED

Product link: [RSX](#)

- Superior illumination greets customers to a safe, bright parking lot
 - One-for-one replacement of HID lighting with super-efficiency, up to 155 lumens per watt
 - "no drill" solution saves up to 75% on installation labor
-



WPX LED

Product link: [WPX](#)

- One series offers configurations and solutions for lower mounting heights up to 20 feet
- Competitive pricing and always in stock
- Wide distributions allow for extended spacing and more savings

Lighting is highly configurable & customizable
Additional site specific information will be required for quoting



ARC LED

Product link: [ARC](#)

- Visually comfortable wall-mounted fixture with reduced glare with high-end appeal
 - An architecturally pleasing form upgrades building styling
 - Ideal for over-the-door and wall mounting up to 15 feet
-



WDGE LED

Product link: [WDGE](#)

- A wall pack solution for all mounting heights
- Visually comfortable optics for lower mounting heights and area distributions for high installations
- Its clean lines blend into many architectural styles



BLTR LED

Product link: [BLTR](#)

- The look and performance of a new lay-in fixture with a labor-saving retrofit
- A quick, easy update for most existing troffers and parabolics
- Available in 2x4, 2x2 and 1x4 sizes



LDNRV LED

Product link: [LDN](#)

- Retrofit your downlights in under four minutes
- Saves up to 80% of energy usage over HID and fluorescent options
- Increases product visibility and energy savings

Lighting is highly configurable & customizable
Additional site specific information will be required for quoting



LRT LED

Product link: [LRT12](#)

- Updates most existing 12" rough-in cans from below the ceiling line
 - The hyperbolic trim option creates a quiet, low-glare ceiling line
 - Averages 10 years of maintenance-free service
-

Lighting is highly configurable & customizable
Additional site specific information will be required for quoting

DECORATIVE LIGHTING



MAKE AN IMPACT STANDOUT

- Create drama in even the smallest spaces
- Creative & inviting solutions
- Transform & enhance on any budget



Dependable Decorative Lighting Solutions

Pendants

Sconces

Chandeliers

Goosenecks

Lanterns

Cylinders & Rings

Architectural

And much more

**Contact UNFI Equipment
Services for information**

EMAIL: EQUIPMENTSERVICES@UNFI.COM

PHONE: 1.800.835.0165



BETTER FOOD. BETTER FUTURE.

EQUIPMENT SERVICES