



EQUIPMENT SERVICES

2025 PRODUCT CATALOG



FLORAL

Equipment Services



EMAIL: EQUIPMENTSERVICES@UNFI.COM PHONE: 1.800.835.0165

Inside this section:

| | |
|---|-----|
| Bouquet Displays | 4 |
| Nesting Tables | 6 |
| Plant & Gift Displays | 7 |
| Display Accessories | 14 |
| Tools & Accessories | 20 |
| Watering | 22 |
| Outdoor Displays | 23 |
| Floral Smallwares Program | 26 |
| Refrigeration—see refrigeration section | N/A |

Contact UNFI Equipment Services for member pricing & ordering
equipmentservices@unfi.com or 1.800.835.0165

Items in this catalog are subject to change & availability



MOBILE BOUQUET STAND

- Holds (3) 10" vases (included)
- Black stand
- Casters for mobility

| ITEM NO | SIZE | DESCRIPTION |
|---------|----------------------------|-------------------------------------|
| BD3A-C | 18 1/2"d x 18 1/2"w x 33"h | INCLUDES VASES, SIGN CLIP & CASTERS |



3-TIER BOUQUET BUCKET HOLDER

- Holds (3) 11" galvanized buckets (included)
- Casters for mobility
- Buckets hold standard 3-gallon grower/

| ITEM NO | SIZE | DESCRIPTION |
|---------|------------------------|---------------------------------------|
| BD3G | 28 1/2"d x 17"w x 43"h | INCLUDES BUCKETS, SIGN CLIP & CASTERS |



4-TIER BOUQUET VASE HOLDER

- Holds (4) 15" galvanized vases (included)
- Silver tubular frame
- Casters for mobility

| ITEM NO | SIZE | DESCRIPTION |
|---------|------------------------|--|
| BD4AG | 28 1/2"d x 17"w x 43"h | INCLS GALV VASES & LINERS, SIGN CLIP & CASTERS |



3-TIER BOUQUET VASE HOLDER

- Holds (6) 10" designer vases (included)
- Black tubular frame
- Casters for mobility

| ITEM NO | SIZE | DESCRIPTION |
|---------|------------------------|----------------------------------|
| BD6H | 28 1/2"d x 17"w x 43"h | INCLS VASES, SIGN CLIP & CASTERS |



4-TIER BOUQUET VASE HOLDER

- Holds (8) 10" designer vases (included)
- Black tubular frame
- Casters for mobility

| ITEM NO | SIZE | DESCRIPTION |
|----------|------------------------|----------------------------------|
| BD8H-100 | 28 1/2"d x 17"w x 43"h | INCLS VASES, SIGN CLIP & CASTERS |



ROUND MOBILE FLORAL DISPLAY

- Black metal display w/ laminate base
- Casters for mobility
- Incls: floral cones, shelves w/ PTM, holders for cards & bouquet bags

| ITEM NO | SIZE | DESCRIPTION |
|---------------|---------------|-------------------------------------|
| FL-003 LAM CH | 50"dia x 48"h | INCLS VASES, SIGN HOLDERS & CASTERS |



NESTING TABLES W/ SS TOPS

- Stainless steel tops & leg caps
- Tapered legs with choice of stain finish
- Sold individually so you can configure to your liking

| ITEM NO | SIZE | DESCRIPTION |
|--------------|-----------------------|----------------------|
| NT-82 OSS SV | 36" w x 16" d x 24" h | STAINLESS STEEL TOPS |
| NT-80 OSS SV | 48" w x 16" d x 29" h | STAINLESS STEEL TOPS |
| NT-81 OSS SV | 60" w x 16" d x 34" h | STAINLESS STEEL TOPS |



LAMINATE TABLES W/ METAL FRAME

- Set of 3 tables
- Black metal frames w/ laminate inserts
- Choice of laminate

| ITEM NO | SIZE | DESCRIPTION |
|---------------------|-----------------------|--|
| 38658-A NT-38658 RO | 50" W X 20" D X 36" H | METAL FRAME, CHOICE OF LAMINATE INSERT |

NESTING TABLES



FARMHOUSE STYLE TABLES

- Set of 3 tables
- Large table w/ turned legs & nesting benches
- Choice of stain finish for body & tops

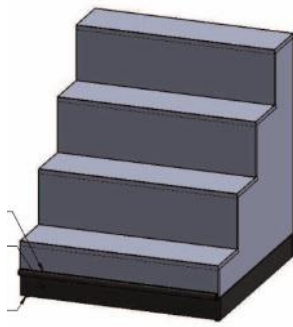
| ITEM NO | SIZE | DESCRIPTION |
|-----------------|--|--|
| NT-35374 O150WH | (1) 60" L X 30" W X 32" H (2) 47" L X 15" D X 25" H | FARMHOUSE STYLE SET CHOICE OF FINISH FOR BODY & TOP |



LAMINATE NESTING TABLES

- Multiple sets to choose from
- Choice of laminate tops
- Square legs in solid wood with vertical corner guards

| ITEM NO | SIZE | DESCRIPTION |
|--------------------|--|-------------------|
| NT-100 SET OSB | L: 60"x35", M: 48"x30", S: 36"x25" - All 30"d | LARGE 3 TABLE SET |
| NT-166 SET O150SB | L: 48"x29", M: 36"x24", S: 30"x19" - All 30"d | SMALL 3 TABLE SET |
| NT-171 SET O150SB | (1)L: 48"x29", (2)M: 36"x24", (2)S: 30"x19" - All 30"d | SMALL 5 TABLE SET |
| NT-177 SET O 150SB | L: 36"x29", M: 30"x24" - All 30"d | SMALL 2 TABLE SET |



FLORAL STEPS

- Choice of laminate
- 4 Steps, each measuring 9" deep
- Black bumper on front side only so units can sit flush

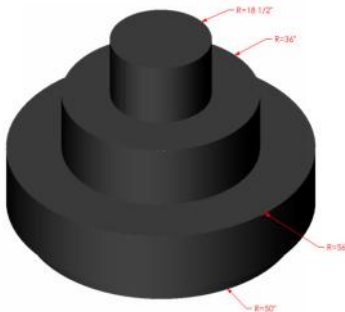
| ITEM NO | SIZE | DESCRIPTION |
|-----------------|--------------------|-----------------|
| FL-24324 BR LAM | 18"W X 36"D X 40"H | 4-STEP STRAIGHT |
| FL-35291 BR LAM | 24"W X 36"D X 40"H | 4-STEP STRAIGHT |
| FL-24325 BR LAM | 30"W X 36"D X 40"H | 4-STEP STRAIGHT |
| FL-24291 OSVSB | 36"W X 36"D X 40"H | 4-STEP STRAIGHT |
| FL-24319 BR LAM | 48"W X 36"D X 40"H | 4-STEP STRAIGHT |
| FL-24326 BR LAM | 60"W X 36"D X 40"H | 4-STEP STRAIGHT |
| FL-24320 OSV | 36"W X 36"D X 40"H | 4-STEP CORNER |



FLORAL STEPS - LOW PROFILE

- Choice of laminate
- 2 Steps, each measuring 12" deep
- Black bumper on front side only so units can sit flush

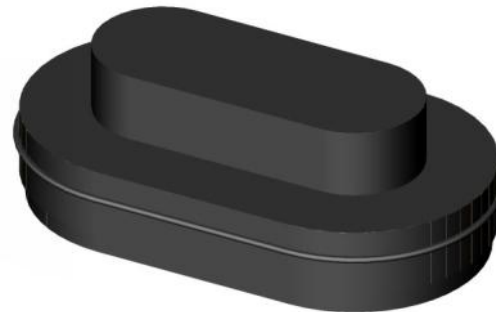
| ITEM NO | SIZE | DESCRIPTION |
|--------------|--------------------|--------------------------|
| FL-027 BIRCH | 60"W X 36"D X 40"H | 2-STEP LOW |
| FL-025 BIRCH | 48"W X 36"D X 40"H | 2-STEP LOW |
| FL-028 BIRCH | 36"W X 36"D X 40"H | 2-STEP LOW |
| FL-024 BIRCH | 24"W X 36"D X 40"H | 2-STEP LOW |
| FL-026 BIRCH | 24"W X 36"D X 40"H | 2 STEP RADIUS CORNER END |



ROUND STEP DISPLAY

- Black laminate
- 1 row of black bumper
- Non-locking casters

| ITEM NO | SIZE | DESCRIPTION |
|-----------------|---------------|-------------|
| RFD-BK LAMINATE | 56"DIA X 41"H | 3-STEP |



OVAL STEP DISPLAY

- Black laminate
- 1 row of black bumper
- Non-locking casters

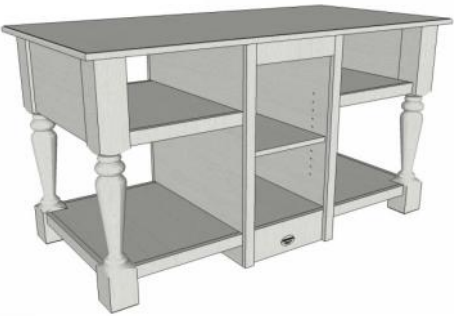
| ITEM NO | SIZE | DESCRIPTION |
|-----------------|--------------------|-------------|
| OFD-BK LAMINATE | 84"W X 48"D X 28"H | 2-STEP |



FLORAL TOWER SET

- Set of 3 towers on casters
- Black metal frame with glass shelves
- Top & base are fixed. 24"h: 2 adj shelves, 30"h: 2 adj shelves, 36"h: 3 adj shelves

| ITEM NO | SIZE | DESCRIPTION |
|----------------|------------------------------|-------------|
| DISP-05 SET SB | 24"w x 24"d x 24"h/30"h/36"h | SET OF 3 |



FARMHOUSE GIFT TABLE

- Turned legs & decorative styling
- Center section with adjustable shelf

| ITEM NO | SIZE | DESCRIPTION |
|-------------|--------------------|------------------|
| BAK-1464 RD | 60"W X 30"D X 32"H | CHOICE OF FINISH |



FARMHOUSE FLORAL HUTCH

- One row of 4 pull out drawers
- 2 open fixed shelves below
- Top cabinet with 2 adj shelves and bead-board back

| ITEM NO | SIZE | DESCRIPTION |
|-------------|-------------------|---------------------|
| HUTCH-004 O | 8'L X 25"D X 78"H | RUSTIC WHITE FINISH |



FLORAL GIFT HUTCH

- Lower cabinet w/ 1 adjustable shelf
- Upper cabinet w/ 2 adjustable shelves
- Fixed stainless steel counter, Crown molding on front only

| ITEM NO | SIZE | DESCRIPTION |
|---------------|-------------------|------------------|
| FL-044 O | 3FT X 78"H X 22"D | CHOICE OF FINISH |
| FL-HUTCH 03 O | 4FT X 78"H X 22"D | CHOICE OF FINISH |
| FL-HUTCH 05 O | 5FT X 78"H X 22"D | CHOICE OF FINISH |



THREE-TIER STAND

- Adjustable shelves
- Shelf Diameters: 32", 28" & 24"
- Black powder coat, Includes casters

| ITEM NO | SIZE | DESCRIPTION |
|---------|--------------------|-------------------|
| TTS | 32"w x 32"d x 48"h | BLACK POWDER COAT |



FOUR-TIER STAND

- Adjustable shelves
- Shelf Diameters: 32", 28", 24" & 20"
- Black powder coat, Includes casters

| ITEM NO | SIZE | DESCRIPTION |
|---------|--------------------|-------------------|
| TDS | 32"w x 32"d x 61"h | BLACK POWDER COAT |



CIRCULAR DISPLAYS

- Adjustable shelves
- Shelf Diameters: 32", 28" & 24"
- Galvanized finish, Includes casters

| ITEM NO | SIZE | DESCRIPTION |
|----------|------------------------|-------------|
| CD3000 | 32"w x 32"d x 54"h | GALVANIZED |
| CD4000 | 32"w x 32"d x 55 3/8"h | GALVANIZED |
| CD4000SH | 11" x 7" | 3-SIDED |



CIRCULAR DISPLAY WITH TOPPER

- Adjustable center shelf
- Fixed base & topper
- Galvanized finish, Includes casters



2-TIER CIRCULAR ISLAND

- Great for large merchandise
- Available with or without casters
- Galvanized finish

| ITEM NO | SIZE | DESCRIPTION |
|----------|--------------------|------------------------------|
| CD3500 | 60"w x 60"d x 38"h | 2-TIER GALVANIZED |
| CD3500-C | 60"w x 60"d x 38"h | 2-TIER GALVANIZED W/ CASTERS |



3-TIER CIRCULAR ISLAND

- Great for large merchandise
- Available with or without casters
- Galvanized finish

| ITEM NO | SIZE | DESCRIPTION |
|----------|--------------------|------------------------------|
| CD3550 | 60"w x 60"d x 61"h | 3-TIER GALVANIZED |
| CD3550-C | 60"w x 60"d x 61"h | 3-TIER GALVANIZED W/ CASTERS |



XL 3-TIER CIRCULAR ISLAND

- Great for large merchandise
- Available with or without casters
- Galvanized finish

| ITEM NO | SIZE | DESCRIPTION |
|----------|------------------------|---------------------------------|
| CD3570 | 84"w x 84"d x 56 1/4"h | XL 3-TIER GALVANIZED |
| CD3570-C | 84"w x 84"d x 56 1/4"h | XL 3-TIER GALVANIZED W/ CASTERS |



POINSETTIA TREE - 3 1/2' FULL

- Full round display
- Green finish
- (25) 6" Moveable Rings on 3 rows with 12" between rows. Holds 6"-6.5" pots

| ITEM NO | SIZE | DESCRIPTION |
|---------|------------------------|---------------------|
| 071FB | 3 1/2'h x 29" diameter | FULL ROUND TREE |
| 3838 | 38" diameter x 2" h | BLACK PVC DRIP TRAY |



POINSETTIA TREE - 5 1/2' FULL

- Full round display
- Green finish
- (50) 6" Moveable Rings on 5 rows with 12" between rows. Holds 6"-6.5" pots

| ITEM NO | SIZE | DESCRIPTION |
|---------|----------------------------|---------------------|
| 1056 | 5 1/2'h x 41 3/8" diameter | FULL ROUND TREE |
| 4949 | 49" diameter x 2"h | BLACK PVC DRIP TRAY |



POINSETTIA TREE - 6 1/2' FULL

- Full round display
- Green finish
- (70) 6" Moveable Rings on 6 rows with 12" between rows. Holds 6"-6.5" pots

| ITEM NO | SIZE | DESCRIPTION |
|---------|------------------------|---------------------|
| 106FB | 6 1/2'h x 48" diameter | FULL ROUND TREE |
| 6262 | 62" diameter x 2"h | BLACK PVC DRIP TRAY |



POINSETTIA TREE - 3 1/2' HALF

- Half round display
- Green finish
- (13) 6" Moveable Rings on 3 rows with 12" between rows. Holds 6"-6.5" pots

| ITEM NO | SIZE | DESCRIPTION |
|---------|-----------------------|---------------------|
| 072W | 3 1/2'h x 29"w x 15"d | HALF ROUND TREE |
| 4619 | 46"w x 19"d x 2"h | BLACK PVC DRIP TRAY |



POINSETTIA TREE - 5 1/2' HALF

- Half round display
- Green finish
- (30) 6" Moveable Rings on 5 rows with 12" between rows. Holds 6"-6.5" pots

| ITEM NO | SIZE | DESCRIPTION |
|---------|-----------------------|---------------------|
| 104 | 5 1/2'h x 43"w x 21"d | HALF ROUND TREE |
| 4925 | 49"w x 25"d x 2"h | BLACK PVC DRIP TRAY |



POINSETTIA TREE - 6 1/2' HALF

- Half round display
- Green finish
- (35) 6" Moveable Rings on 6 rows with 12" between rows. Holds 6"-6.5" pots

| ITEM NO | SIZE | DESCRIPTION |
|---------|-----------------------|---------------------|
| 102WM | 6 1/2'h x 48"w x 24"d | HALF ROUND TREE |
| 6231 | 62"w x 31"d x 2"h | BLACK PVC DRIP TRAY |



BENCHMASTER 2-TIER ROUND

- All-plastic display
- Use inside or outside
- Casters for mobility

| ITEM NO | SIZE | DESCRIPTION |
|-----------|-------------------|--------------|
| BC482402T | 48"/30"dia x 28"h | WITH CASTERS |
| BC602402T | 60"/36"dia x 28"h | WITH CASTERS |



BENCHMASTER 3-TIER ROUND

- All-plastic display
- Use inside or outside
- Casters for mobility



BENCHMASTER 3-TIER W/ PLANT HANGER

- All-plastic display
- Use inside or outside
- Casters for mobility

| ITEM NO | SIZE | DESCRIPTION |
|-----------|-----------------------|--------------|
| BC485003T | 48"/36"/30"dia x 50"h | WITH CASTERS |
| BC605003T | 60"/48"/36"dia x 50"h | WITH CASTERS |



BENCHMASTER 5-STEP PYR-AMID

- All-plastic display
- Use inside or outside
- Double sided display

| ITEM NO | SIZE | DESCRIPTION |
|------------|-----------------------|-------------------|
| BC605003TP | 60"/48"/36"dia x 86"h | WITH PLANT HANGER |



BENCHMASTER 5-STEP PYR-AMID W/ CASTERS

- All-plastic display
- Use inside or outside
- Double sided display w/ casters

| ITEM NO | SIZE | DESCRIPTION |
|-----------|--------------------|---------------------------|
| SC363605P | 36"L x 63"W x 43"H | 5-STEP PYRAMID W/ CASTERS |
| SC663605P | 66"L x 63"W x 43"H | 5-STEP PYRAMID W/ CASTERS |
| SC963605P | 96"L x 63"W x 43"H | 5-STEP PYRAMID W/ CASTERS |



BENCHMASTER 3-STEP WALL

- All-plastic display
- Use inside or outside
- Single sided display

| ITEM NO | SIZE | DESCRIPTION |
|-----------|--------------------|----------------|
| SM663603W | 66"L x 39"W x 36"H | 3-STEP DISPLAY |
| SM963603W | 96"L x 39"W x 36"H | 3-STEP DISPLAY |



BENCHMASTER 3-STEP PLANT HANGER PLUS

- All-plastic display
- Use inside or outside
- Includes bars for hanging baskets

| ITEM NO | SIZE | DESCRIPTION |
|-----------|--------------------|--------------------------------|
| SM367203W | 36"L x 63"W x 43"H | 3-STEP DISPLAY W/ PLANT HANGER |
| SM667203W | 66"L x 63"W x 43"H | 3-STEP DISPLAY W/ PLANT HANGER |
| SM967203W | 96"L x 63"W x 43"H | 3-STEP DISPLAY W/ PLANT HANGER |



GALVANIZED VASES & LINERS

- Galvanized vases w/ handles
- Black plastic liners ordered separately
- Packed 6 per carton



DESIGNER VASES

- Black plastic flared vases
- Packed 6 per carton

| ITEM NO | SIZE | DESCRIPTION |
|---------|--------------------------------------|-------------|
| FS10 | 10"H X 9" TOP DIA / 5.5" BASE DIA | PACK OF 6 |
| FS13 | 13"H X 10.5" TOP DIA / 6.5" BASE DIA | PACK OF 6 |
| FS16 | 16"H X 12.5" TOP DIA / 7" BASE DIA | PACK OF 6 |



PEGBOARD/SLATWALL VASE KIT

- Rings hang on pegboard or slatwall
- Vases included
-

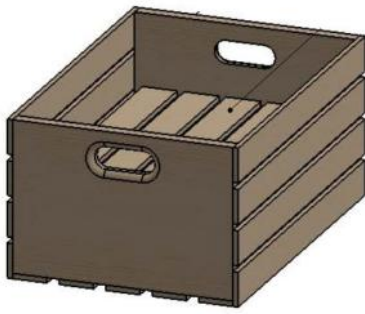
| ITEM NO | SIZE | DESCRIPTION |
|--------------|-------------------------------|-------------|
| PB24/SW24 | 10" VASES & RINGS | PACK OF 24 |
| PB6/SW6 | 10" VASES & RINGS | PACK OF 6 |
| PB6/SW6-GV12 | 12"GALV VASES, LINERS & RINGS | PACK OF 6 |



WIRE GRID VASE KIT

- Rings hang on wire grid
- Vases included
-

| ITEM NO | SIZE | DESCRIPTION |
|----------|-------------------|-------------|
| WIRE KIT | 10" VASES & RINGS | PACK OF 6 |



WOOD CRATE W/ INSERT

- Includes removeable insert
- Handle cutouts
- Choice of stain finish

| ITEM NO | SIZE | DESCRIPTION |
|------------|-------------------------|-----------------|
| CRATE-66 P | 20" x 13 3/4" x 9 3/8"h | CHOICE OF STAIN |



STACKABLE FLORAL CUBES

- 2 sizes available
- Stackable design
- Black Plastic

| ITEM NO | SIZE | DESCRIPTION |
|---------|------------------|-------------|
| DC3 | 12" x 12" x 11"h | PACK OF 3 |
| DC6 | 12" x 12" x 6"h | PACK OF 6 |



ACRYLIC RISERS

- 2 sizes available
- Nesting
- Use to create better product visibility

| ITEM NO | SIZE | DESCRIPTION |
|---------|---------------|-------------|
| RIS4 | 6" x 6" x 4"h | PACK OF 6 |
| RIS6 | 6" x 8" x 6"h | PACK OF 6 |



BOUQUET BAG STANDS

- Holds multiple packs & sizes of bags
- Two styles available
- Self service sign included

| ITEM NO | SIZE | DESCRIPTION |
|---------|------------------------------|-------------|
| BBS-C | 18" x 18" x 43 1/2"h | Mobile Base |
| BBS-P | 11 3/4" x 11 3/4" x 39 1/2"h | Flat Base |



BOUQUET BAGS

- 10 packs of 100 bags per box
- Two styles available
- Sealed bottoms

| ITEM NO | SIZE | DESCRIPTION |
|---------|--------------------------------|-------------|
| 144CB | 13 1/2" top x 4" bottom x 25"h | Clear Back |
| 144WB | 13 1/2" top x 4" bottom x 25"h | White Back |



CHALKBOARD SIGNS & MARKERS

- Erasable chalkboard
- Colorful water-based markers
- Use with Classy or Free-Standing sign holders

| ITEM NO | SIZE | DESCRIPTION |
|---------|--|-------------|
| CB57 | 5 1/2" x 7" | Pack of 6 |
| CB711 | 7" x 11" | Pack of 6 |
| CM-1 FM | Fine tip: Pink, white, green, yellow, blue | Pack of 5 |
| CM-2 FM | Broad tip: Pink, green, yellow, orange, red | Pack of 5 |



CLASSY SIGN HOLDERS

- Can be used vertically or horizontally
- Includes stand & optional adjustable stem
- Use with optional chalkboard inserts

| ITEM NO | SIZE | DESCRIPTION |
|------------|-------------|-------------|
| FAC57-FMS | 5 1/2" x 7" | Pack of 6 |
| FAC711-FMS | 7" x 11" | Pack of 6 |



FREE-STANDING SIGN HOLDERS

- Simple signing system
- Wire stand with clip to hold sign
- Use with optional chalkboard inserts

| ITEM NO | SIZE | DESCRIPTION |
|---------|----------|-------------|
| FSSH-12 | 12" tall | Pack of 6 |
| FSSH-18 | 18" tall | Pack of 6 |



FLOWER BUYER'S GUIDE

- 14.5"H X 46.5"W
- Offers informative content for customers
- Use with the barn wood sign frames

| ITEM NO | SIZE | DESCRIPTION |
|----------|-------------------------------------|---|
| B3210158 | 14.5"H X 46.5"W | SINGLE SIDED FLOWER POWER BUYER'S GUIDE |
| B3410021 | HANGING BARN WOOD SIGN HOLDER | USE WITH FLOWER GUIDE, INCL HANGING HOOKS |
| B3110084 | HANGING KIT FOR BARNWOOD SIGN FRAME | MOUNTS BARN WOOD SIGN FRAME FROM CEILING |
| B3410022 | BARN WOOD FRAME W/EASEL BASE | USE WITH FLOWER GUIDE |



FLORAL BASKET SIGN

- Set of 5 floral basket signs
- Includes jumbo spring clip
- Displays cut floral care instructions

| ITEM NO | SIZE | DESCRIPTION |
|----------|----------------|---|
| B1600009 | 6" ROUND SIGNS | RUGGED NON-SLIP CLIP GRIPS BINS & BASKETS |



BLANK FLORAL INSERTS

- SET OF 10
- Use with liquichalk pens
- Various sizes available



FLORAL TAGS

- Sold per each
- Use with liquichalk pens
- Great for in-store promotions & sales

| ITEM NO | SIZE | DESCRIPTION |
|----------|--------------------------|----------------------------|
| B1307003 | 4"H X 6"W | SINGLE SIDED |
| 1400002 | LIQUICHALK MARKER KIT #1 | 14 MARKERS, VARIOUS COLORS |
| 1400003 | LIQUICHALK MARKER KIT #2 | 10 MARKERS, VARIOUS COLORS |



FLORAL SIGN KIT

- Includes storage box
- Signs, pricing & sign holders
- Includes everything you'll need to tag your floral department

| ITEM NO | SIZE | DESCRIPTION |
|----------|--------------|---|
| B1307002 | | |
| | 4" X 6"W | 31 FLORAL TAGS W/1-TRACK |
| | 1-5/8" X 3"W | CHALK-DÉCOR NAME INSERT KIT |
| | 1-1/4" | 31 TAG-BANK PRICING STRIP SETS |
| | N/A | 16 BLACK BUCKET CLIPS & 15 CLEAR BASKET CLIPS |



FLORAL SIGN HOLDER

- Adaptor fits around floral display posts
- Holds 11"w x 7"h sign inserts
- Indoor/Outdoor

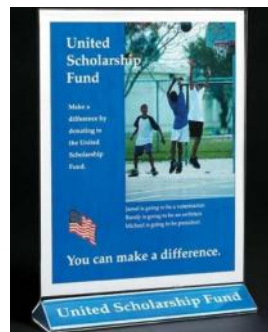
| ITEM NO | SIZE | DESCRIPTION |
|---------|---------------------------------------|-------------------|
| 82625 | HOLDS INSERTS 11"W X 7"H X .02" THICK | SOLD IN KITS OF 5 |



LIQUICHALK MARKERS

- Use with write-on floral tags & signs
- Kit #1: (2) ea white, yellow, peacock & red & (1) ea wisteria, carnation, violet, green, orange & marigold
- Kit #2: (2) ea witeria, honeysuckle & forget-me-not & (1) ea burnt sienna, butter-

| ITEM NO | SIZE | DESCRIPTION |
|---------|--------------------------|----------------------------|
| 1400002 | LIQUICHALK MARKER KIT #1 | 14 MARKERS, VARIOUS COLORS |
| 1400003 | LIQUICHALK MARKER KIT #2 | 10 MARKERS, VARIOUS COLORS |



COUNTERTOP FRAME

- Clear acrylic
- Top load
- Holds 8 1/2" x 11" paper insert

| ITEM NO | SIZE | DESCRIPTION |
|------------|----------------|---------------------------|
| 2204737102 | 8 1/2"W X 11"H | CLEAR ACRYLIC SIGN HOLDER |



POSTERFRAME

- Square tubing
- Top load
- Holds 22"w x 28"h posters up to .25" thick

| ITEM NO | SIZE | DESCRIPTION |
|------------|----------------------------------|-------------|
| 9507737201 | 22"W X 28"H X .02" THICK IINSERT | FLOOR STAND |



POSTERFRAME

- Chrome or black finish available
- Top load
- Holds 22"w x 28"h posters up to .25" thick

| ITEM NO | SIZE | DESCRIPTION |
|------------|----------------------------------|---------------|
| 9503566701 | 22"W X 28"H X .02" THICK IINSERT | CHROME FINISH |
| 9503566702 | 22"W X 28"H X .02" THICK IINSERT | BLACK FINISH |



A-FRAME

- Indoor/Outdoor
- Metal, foldable
- Holds 22"w x 28"h graphics

| ITEM NO | SIZE | DESCRIPTION |
|------------|--------------------------|--------------------------|
| 9509776901 | 22"W X 28"H GRAPHIC AREA | SUITABLE FOR OUTDOOR USE |



3RR

- Holds 3 rows of ribbons
- Accommodates bolts up to 5 1/4" dia



CTR

- Holds 5 rows of ribbons
- Accommodates bolts up to 5 1/4" dia
- Includes ribbon spool holder & scissor holder

| ITEM NO | SIZE | DESCRIPTION |
|---------|---------------------------|-------------|
| 3RR | 7 1/2"d x 18 1/2"w x 18"h | BLACK WIRE |

| ITEM NO | SIZE | DESCRIPTION |
|---------|----------------------------|-------------|
| CTR | 11 3/4"d x 25"w x 36 1/2"h | BLACK WIRE |



CS7

- Complete set
- Incls: 1. ribbon shears, 2. corsage snips
- 3. std floral shears, 4. pruner, 5. wire cutter, 6. knife, 7. hand stem stripper



WH5

- Organize wire and chenille for corsage and bow making

| ITEM NO | SIZE | DESCRIPTION |
|---------|-------------|-------------|
| CS7 | 7 piece set | |

| ITEM NO | SIZE | DESCRIPTION |
|---------|------------------|--------------|
| WH5 | 5"d x 8"w x 12"h | Black Finish |



BBC

- Cut & shear stems with razor sharp blade
- Grippd handle is leveraged for minimal effort
- Includes a safety latch to lock blade in place when

| ITEM NO | SIZE | DESCRIPTION |
|---------|------------|--------------------------------------|
| BBC | 28"d x 5"h | Blade can be resharpened or replaced |



USC-2

- Stainless steel funnel 5" dia
- Comes with 2 extra blades
- Designed to accommodate the largest grower bunches & multiple std bunches

| ITEM NO | SIZE | DESCRIPTION |
|---------|-------------------|------------------------|
| USC-2 | 15"d x 24"w x 5"h | Green tub w/ SS funnel |
| USC-2B | 6 blades per pack | Replacement blades |



SMA

- Stiffens flower stems with wire
- Simply insert stem & pull handle
- Magazine holds 100's of steel picks, steel picks not included

| ITEM NO | SIZE | DESCRIPTION |
|---------|-------------------------------|-------------|
| SMA | 4 1/4"d x 10 1/2"w x 11 1/2"h | |



UCWB14

- Includes removable work tray
- 24" 1-touch wand w/ 5" flexible no drip tip
- 12' super-flex hose w/ brass fittings, plus a multi-pocket nylon trash bag

| ITEM NO | SIZE | DESCRIPTION |
|---------|--------------------|--------------------|
| UCWB14 | 39"d x 18"w x 33"h | 14 GALLON CAPACITY |



WB11

- Capacity 11 gallons
- Filling time 3 minutes
- Filled weight 129 lbs.

| ITEM NO | SIZE | DESCRIPTION |
|---------|--------------------|--------------------|
| WB11 | 24"d x 17"w x 25"h | 11 GALLON CAPACITY |

WATERING



WB14

- Capacity 14–16 gallons
- Filling time 4 minutes
- Filled weight 132 lbs.

| ITEM NO | SIZE | DESCRIPTION |
|---------|--------------------|-----------------------|
| WB14 | 23"d x 18"w x 40"h | 14-16 GALLON CAPACITY |



4-STEP DISPLAY W/ OVER-HEAD RACK

- Mesh shelves allows good air flow
- 1" Tube steel construction
- 4-step with overhead frame merchandises potted and hanging plants together

| ITEM NO | SIZE | DESCRIPTION |
|---------------|-----------------|-------------------|
| MET-FS 003 BK | 60" X 48" X 74" | Black Powder Coat |



3-STEP DISPLAY

- Mesh shelves allows good air flow
- 1" Tube steel construction
- Heavy-duty locking casters provide stability and mobility

| ITEM NO | SIZE | DESCRIPTION |
|-----------|-----------------------------|-------------------|
| MET-FS BK | 47 1/2" X 35 1/4" X 30 3/4" | Black Powder Coat |



BASKET HANGER DISPLAY

- Galvanized steel construction
- Capacity: (24) 10-inch hanging baskets
- Optional wreath kit holds (90) 24-inch wreaths

| ITEM NO | SIZE | DESCRIPTION |
|------------|--------------------|---------------------------------------|
| BH3000 | 72"W X 73"D X 82"H | Basket hanger |
| BH3000-C | 72"W X 73"D X 82"H | Basket hanger w/ casters |
| BH3000WK | 72"W X 73"D X 82"H | Basket hanger w/ wreath kit |
| BH3000WK-C | 72"W X 73"D X 82"H | Basket hanger w/ wreath kit & casters |



NARROW BASKET HANGER DISPLAY

- Galvanized steel construction
- Capacity: (47) 10-inch hanging baskets
- Unit comes standard w/ casters and fits through a 36-inch door frame

| ITEM NO | SIZE | DESCRIPTION |
|----------|--------------------|-----------------------------|
| BH4000 | 76"W X 34"D X 78"H | Basket hanger |
| BH4000WK | 76"W X 34"D X 78"H | Basket hanger w/ wreath kit |



TRI STEP DISPLAY

- Galvanized steel construction
- Cap: (24) 1020-style flats per 6ft section
- Optional 48" h double purlin holds (12) 10" hanging baskets per 6ft section

| ITEM NO | SIZE | DESCRIPTION |
|-----------|----------------------------|--------------------------------------|
| PX7020 | 73.25" w x 40" d x 44.5" h | Single unit |
| PX7020-C | 73.25" w x 40" d x 44.5" h | Single unit w/ casters |
| PX7020-CP | 73.25" w x 40" d x 92" h | Single unit w/ casters & purlin |
| PX7020-CS | 73.25" w x 40" d x 44.5" h | Single unit w/ casters & sign holder |
| PX7020-P | 73.25" w x 40" d x 92" h | Single unit w/ purlin |
| PX7020-S | 73.25" w x 40" d x 44.5" h | Single unit w/ sign holder |
| EC7020 | 40" d x 44.5" h | End cap for PX7020 |
| EC7020-C | 40" d x 44.5" h | End cap w/ casters for PX7020-C* |



DOUBLE TRI STEP DISPLAY

- Galvanized steel construction
- Cap: (48) 1020-style flats per 6ft section
- Optional 48" h double purlin holds (24) 10" hanging baskets per 6ft section

| ITEM NO | SIZE | DESCRIPTION |
|----------|------------------------------|----------------------------------|
| PX7021 | 73.25" w x 75.5" d x 44.5" h | Double sided unit |
| PX7021-P | 73.25" w x 75.5" d x 92" h | Double sided unit w/ purlin |
| PX7021-S | 73.25" w x 75.5" d x 44.5" h | Double sided unit w/ sign holder |
| EC7020 | 40" d x 44.5" h | Use 2 as end cap for PX7021 |



FLAT MATE DISPLAY

- Galvanized steel construction
- Cap: (15) 1020-style flats per 6ft section
- Optional 39.25" H single basket purlin holds (6) 10" hanging baskets

| ITEM NO | SIZE | DESCRIPTION |
|-----------|------------------------------|--|
| PX7025-CP | 73.25" w x 26.5" d x 84" h | Single unit w/ casters & single purlin |
| EC7025-C | 73.25" w x 26.5" d x 44.5" h | Single unit w/ casters |



NARROW 2-TIER DISPLAY

- Galvanized steel construction
- Cap: (12) 1020-style flats per 6ft section
- Optional 48" h double purlin holds (12) 10" hanging baskets per 6ft section

| ITEM NO | SIZE | DESCRIPTION |
|-----------|----------------------------|---------------------------------|
| PX7030-CP | 73.25" w x 27.5" d x 78" h | 2-Tier unit w/ casters & purlin |
| EC7030-C | 24" x 35 1/2" h | 1/2 Radius end cap |



EZ-MART GREENHOUSE

- Tool-Free Assembly
- Incl's Side Benching & Hanging Purlins
- Slide-Side Ventilation & Latching End Door

| ITEM NO | SIZE | DESCRIPTION |
|---------|--------------------|-------------|
| EZ3006 | 10"W X 6"L X 10"H | 2-Step |
| EZ3012 | 10"W X 12"L X 10"H | 2-Step |
| EZ3018 | 10"W X 18"L X 10"H | 2-Step |
| EZ3024 | 10"W X 24"L X 10"H | 2-Step |

OUTDOOR DISPLAYS

Floral Solutions

HUBERT® and UNFI are proud to partner together to offer a direct order smallwares program to independent retailers. We understand the challenges food retailers face, so this program offers an array of benefits, products, and services

Benefits & Services Include:

- Discounted Pricing
- Flat Rate Shipping
- Volume Discounting



Products You Need, When You Need Them

Hubert© consistently delivers fast, accurate and low-cost fulfillment services

- Over \$20M in inventory and 30,000 + items available from a single warehouse.
- Our private label, HUBERT© Brand, quality cost saving items.
- 94% of all orders ship same day, 98% within 24 hours.
- 95% of all orders ship from the HUBERT© warehouse in Ohio, reducing the number of shipments to help manage freight cost.



Project Management

Experienced team members on hand to assist with ordering & execution of smallwares standards

- Assistance developing standardized order guides
- Managing smallwares for new stores, remodels & resets
- Experts in visual merchandising
- Free consultation services

HOW TO ORDER:

- Visit our website at www.hubert.com
or call 1-800-543-7374
- Legacy Supervalu retailers use account # 809240
- Legacy UNFI retailers use account # 233779
- For convenient invoicing: Legacy Supervalu retailers on your UNFI Retailer statement. Legacy UNFI retailers HUBERT© invoice or credit card

**Contact UNFI Equipment
Services for more information**



EQUIPMENT SERVICES

101 Jefferson Ave. S.
Hopkins, MN 55343